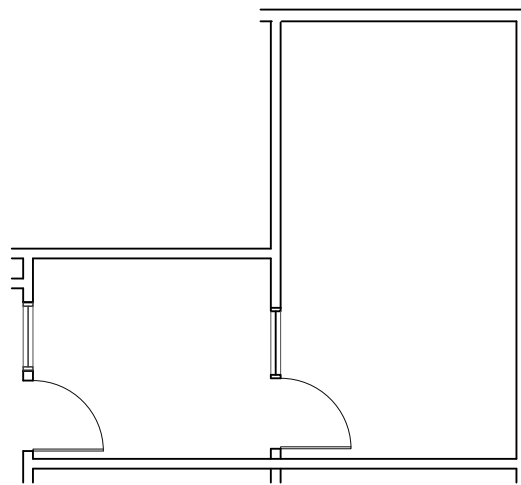




TORRANCE
EXECUTIVE PLAZA

3828-3878 TORRANCE BLVD.
TORRANCE, CALIFORNIA

INTERIOR MINI-SUITE WITH ACCESS TO CONFERENCE ROOM & KITCHEN



SUITE 307

SCALE: 1/8"=1'-0"

DATE: 06-23-2020

348 RSF



3848 Carson Street
Torrance, CA 90503

[BACK TO AVAILABILITY](#)

Corporate License #01355491

NEWMARK

the **Muller**
company

The information contained herein has been obtained from sources deemed reliable but has not been verified and no guarantee, warranty or representation, either express or implied, is made with respect to such information. Terms of sale or lease and availability are subject to change or withdrawal without notice.